

Equations

In the following equations, solve for "n".

$$42 = 7 \times n \quad n = \underline{\hspace{2cm}}$$

$$n \div 8 = 64 \quad n = \underline{\hspace{2cm}}$$

$$11 \times n = 121 \quad n = \underline{\hspace{2cm}}$$

$$4 \times 5 = n \quad n = \underline{\hspace{2cm}}$$

$$1010 = n - 10 \quad n = \underline{\hspace{2cm}}$$



Input Output Tables

Write in the rule for each table below.

Input	Output
180	9
240	12
420	21
Rule:	

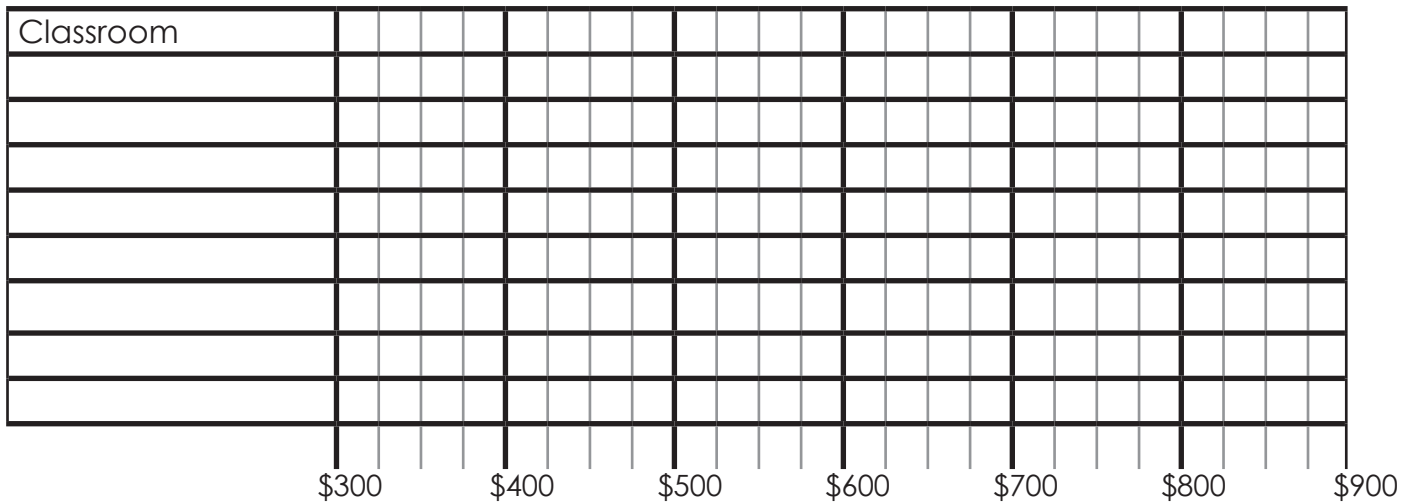
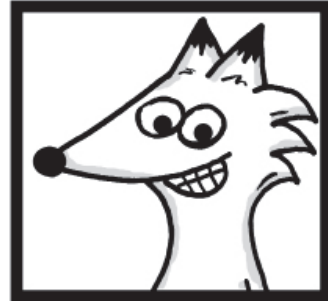
Input	Output
62	248
63	252
64	256
65	260
Rule:	

Input	Output
175	25
196	28
217	31
231	33
Rule:	

Bar Graphs

This table shows which classroom raised the most money in the fundraiser. Create a bar graph to represent this data.

Classroom	Money raised
Mr. Gupta	\$500
Ms. Thomas	\$425
Ms. Xiong	\$325
Ms. Lightfeather	\$550
Mr. Matthews	\$900
Ms. Gasser	\$700
Mr. Okoye	\$475
Ms. Wen	\$350



Equations

Solve the following equations.

$484 \div 4 = \underline{\quad}$

$3509 - 2134 - 231 = \underline{\quad}$

$$\begin{array}{r} 807 \\ \times 4 \\ \hline \end{array}$$

$$\begin{array}{r} 444 \\ 48 \\ 33 \\ + 56 \\ \hline \end{array}$$